
Use Infineon IGBT Library in Qspice

KSKelvin Kelvin Leung
11-3-2023

Infineon IGBT Spice Library

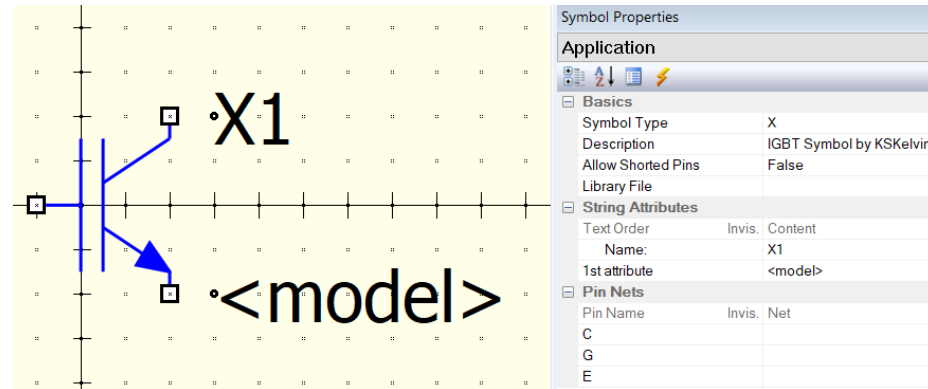
- Infineon IGBT Spice Library

- https://www.infineon.com/dgdl/Infineon-SPICE-L1-IGBT_1200V_HighSpeed3-SimulationModels-v01_01-EN.zip?fileId=8ac78c8c8929aa4d01899bfabcca3417
- Unzip package, library of spice is
 - IGBT_1200V_HighSpeed3_L1.lib
- L1-model name of available model is listed in comment of library
- Model is a sub-circuit with pin order as C G and E

```
.SUBCKT IGW40N120H3_L1 C G E PARAMS: TJ={TEMP}  
X11TG C G E E2 Z01T2 PARAMS: TJ={TJ}  
.ENDS
```

- A custom symbol need to be created for Qspice to use this library and subckt
 - IGBT_Symbol.qsym

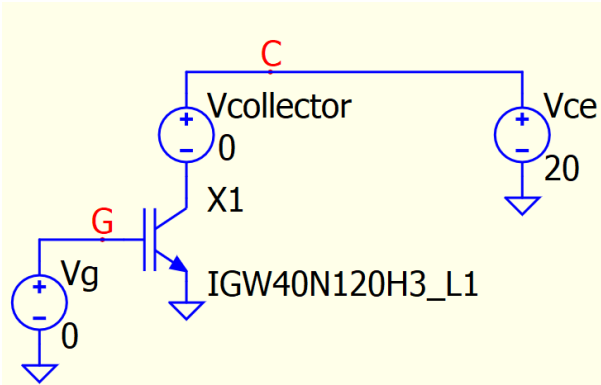
```
* PINS:  
* -----  
* | PIN | DESCRIPTION  
* -----  
* | C   | IGBT collector for single devices and DuoPacks  
* -----  
* | G   | IGBT gate for single devices and DuoPacks  
* -----  
* | E   | IGBT emitter for single devices and DuoPacks  
* -----  
* | K   | IGBT Kelvin emitter sense for single devices and DuoPacks  
* -----  
* Product      Device Type  Vce/V  Ic/A  Package  L1-model name  
* -----  
* IGW15N120H3  Single IGBT  1200   15    PG-TO247-3  IGW15N120H3_L1  
* IGW25N120H3  Single IGBT  1200   25    PG-TO247-3  IGW25N120H3_L1  
* IGW40N120H3  Single IGBT  1200   40    PG-TO247-3  IGW40N120H3_L1  
* IKW15N120H3  DuoPack     1200   15    PG-TO247-3  IKW15N120H3_L1  
* IKW25N120H3  DuoPack     1200   25    PG-TO247-3  IKW25N120H3_L1  
* IKW40N120H3  DuoPack     1200   40    PG-TO247-3  IKW40N120H3_L1  
* IKQ75N120CH3 DuoPack     1200   75    PG-TO247-3  IKQ75N120CH3_L1  
* IKQ50N120CH3 DuoPack     1200   50    PG-TO247-3  IKQ50N120CH3_L1  
* IKQ40N120CH3 DuoPack     1200   40    PG-TO247-3  IKQ40N120CH3_L1  
* IKY75N120CH3 DuoPack     1200   75    PG-TO247-4  IKY75N120CH3_L1  
* IKY50N120CH3 DuoPack     1200   50    PG-TO247-4  IKY50N120CH3_L1  
* IKY40N120CH3 DuoPack     1200   40    PG-TO247-4  IKY40N120CH3_L1  
* -----
```



IGBT IGW40N120H3 Simulation and Datasheet Comparison

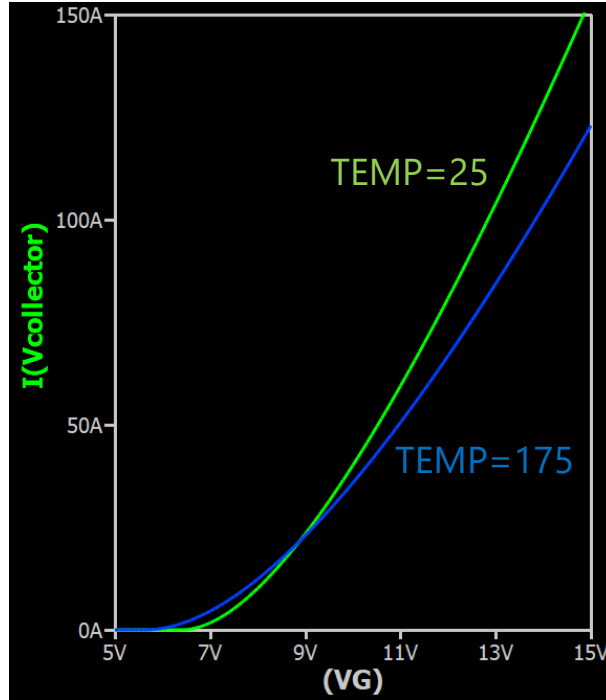
Qspice : Parent - IGBT - IC vs Vg.qsch

Qspice Schematic

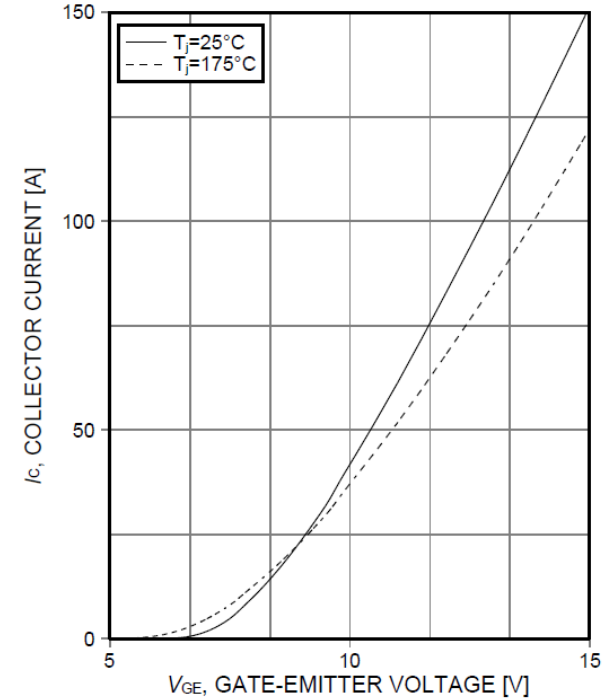


```
.lib IGBT_1200V_HighSpeed3_L1.lib  
.dc Vg 5 15 0.1  
.TEMP 25 175  
.plot I(Vcollector)
```

Simulation Results



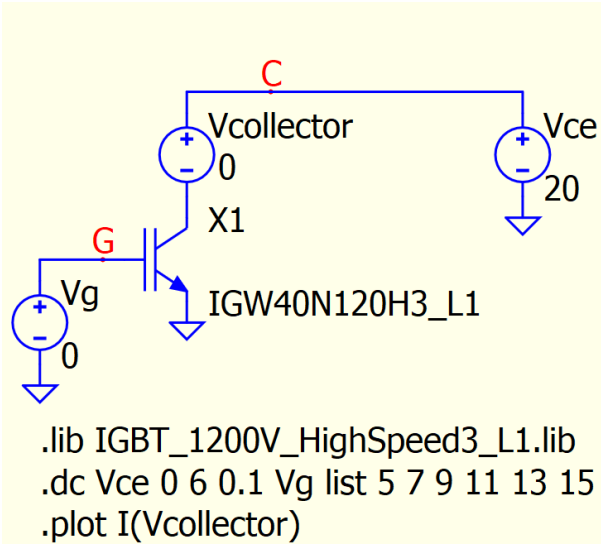
Datasheet Figure 7



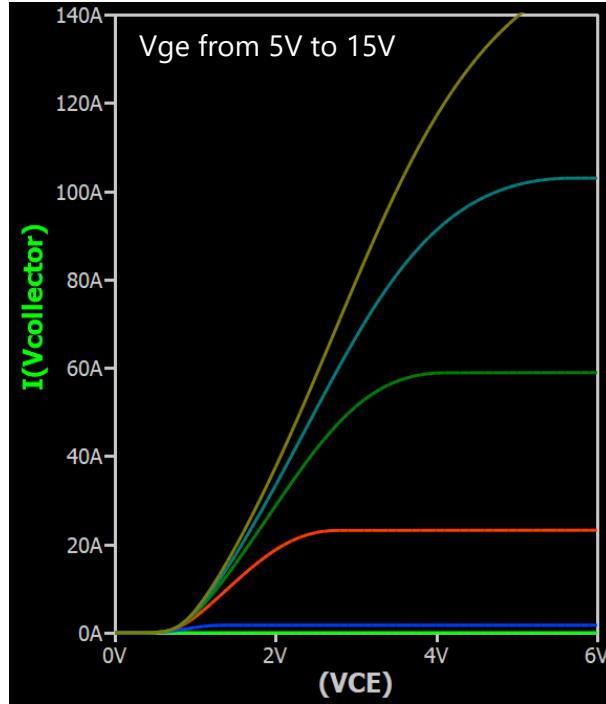
IGBT IGW40N120H3 Simulation and Datasheet Comparison

Qspice : Parent - IGBT - IC vs VCE.qsch

Qspice Schematic



Simulation Results



Datasheet Figure 5

